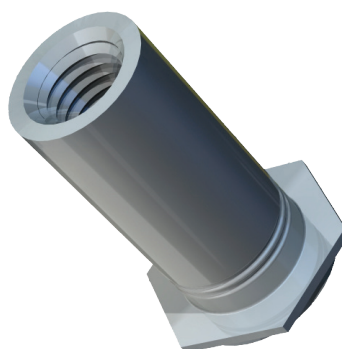
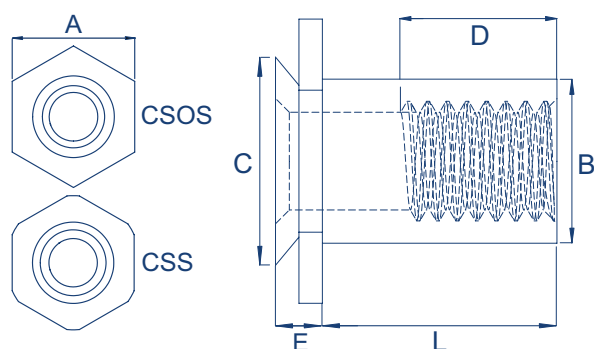


# Concealed Head Standoffs

TR-CSOS/TR-CSS

## Stainless Steel : TR-CSOS / TR-CSS



## Metric Dimensions

Thread		M3	M4	M5	M6
A		6.35	8.73	9.53	11.11
D		5	6.5	9.6	9.6
B		4.2	6.23	7.37	9
C		5.39	7.9	8.72	9.89
Blind mounting hole +/-0.8		5.41	7.92	8.74	9.9
Min distance hole C/L edge		4.8	6.4	7.2	9.5
Hole +0.08 -0.0		5.41	7.92	8.73	9.9
Hole depth	TR-CSOS	1.91	1.91	1.91	1.91
	TR-CSS	1.09	1.09	1.09	-
E min depth of blind hole	TR-CSOS	1.83	1.83	1.83	1.83
	TR-CSS	1.04	1.04	1.04	-
Min rec sheet thickness mm	TR-CSOS	2.4	2.4	2.4	2.4
	TR-CSS	1.6	1.6	1.6	-

## Preferred Range

Thread		M3	M4	M5	M6
Length ±0.4	4	•			
	6	•	•		
	8	•	•		
	10	•			
	12	•			
	16	•			
	20	•			

# Concealed Head Standoffs

TR-CSOS/TR-CSS



## Metric Performance Data: TR-CSOS / TR-CSS

Thread		M3	M4	M5	M6
Installation cold rolled steel (kN)	Stainless steel: TR-CSS	17.8	21.3	24.5	-
	Stainless steel: TR-CSOS	19.2	23.6	26.7	28.9
Pushout (N)	Stainless steel: TR-CSS	1330	1775	2000	-
	Stainless steel: TR-CSOS	1465	1955	2665	2860
Max tightening torque	Stainless steel: TR-CSS	0.55	2	3.6	-
	Stainless steel: TR-CSOS	0.44	1.6	2.9	7.2

These tests have been conducted in laboratory conditions, these figures should therefore be used for guidance only.

All data is correct to the best of our knowledge, however TR cannot be held responsible for any errors or omissions.